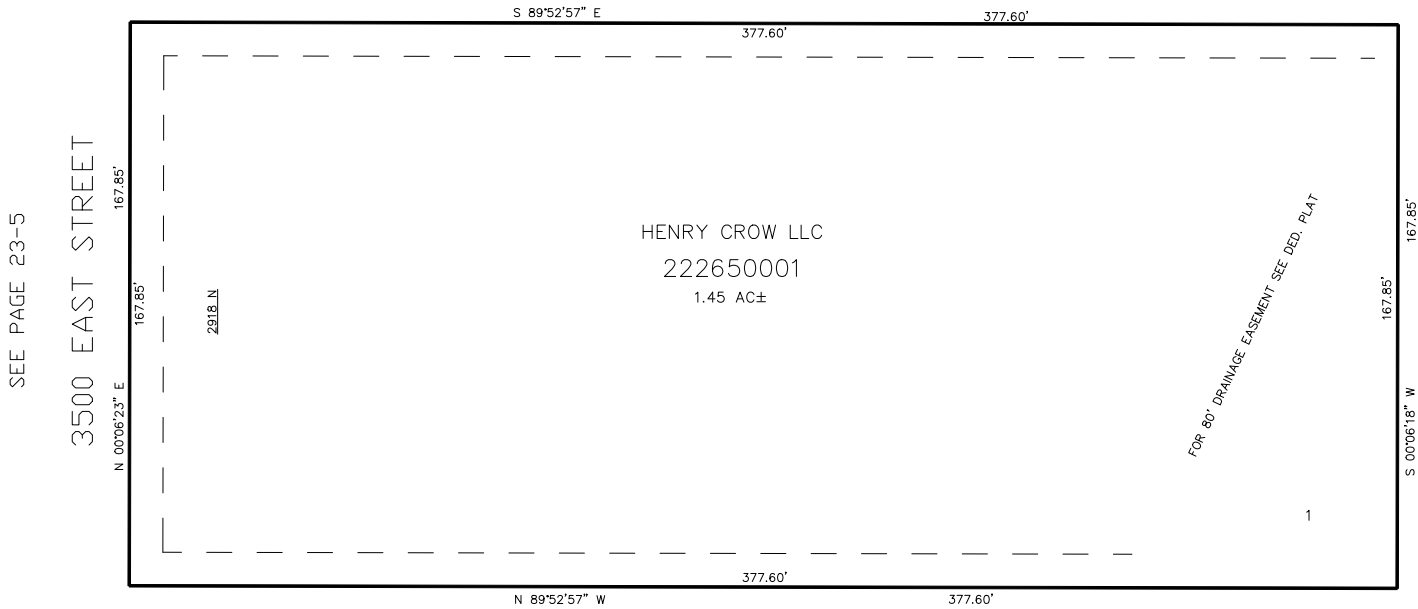


PART OF THE SE.1/4, OF SECTION 29, T.7N., R.1E., S.L.B. & M.
PAIGE SANDERS SUBDIVISION

TAXING UNIT: 36

IN WEBER COUNTY
SCALE 1" = 30'

SEE PAGE 23-3



SEE PAGE 23-3

10' UTILITY & DRAINAGE EASEMENTS EACH
SIDE OF PROPERTY LINES AS INDICATED
BY DASHED LINES EXCEPT AS OTHERWISE
SHOWN.

FOR COMPLETE ENG DATA SEE
ORIGINAL DEDICATION PLAT IN
BOOK 64, PAGE 88 OF RECORDS.